

PROJECT REFERENCES

AGC *Obekon*

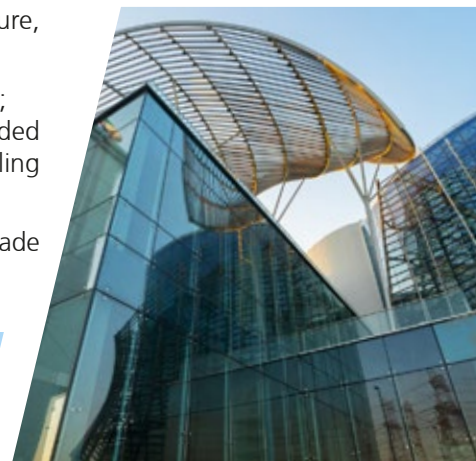
Your Dreams, Our Challenge

I The Art of Living Shopping Centre

Is the first and biggest specialized mall in the MENA region, dedicated to furniture, home appliances, and home accessories.

The Art of Living Mall concept emerged from essential market factors in the UAE; such as the horizontal expansion of the city along Sheikh Zayed Road, which divided the furniture market into several areas where the shoppers are affected by the stifling heat and the difficulty of finding a suitable parking space.

High-performance magnetron coated glass Stopray Vision-51T is used on the facade and low emissivity coated glass iplus Solid on the skylight.



Glass Typology

- ◆ Stopray Vision-51T
- ◆ iPlus Solid

Country: United Arab Emirates

City: Dubai

Owner: MMS GLOBAL developer

Glazing amount: 10,000 m²

| Rochester Institute of Technology

The RIT Dubai campus is strategically located in the heart of Dubai Silicon Oasis, one of the world's leading centers of advanced electronic innovation and design. Magnetron coated glass Stopray Smart 30 on clear substrate was selected for RIT University. The neutral blue colour of the glass makes a great combination with white elements of the facade.

Glass Typology

- ◆ Stopray Smart 30

Country: United Arab Emirates

City: Dubai

Architect: ZAK Consultants

Owner: Rochester Institute of Technology

Glazing amount: 6,000 m²



I Al Habtour Towers

Al Habtour City is a private residences in the bank of the Dubai Canal in Business Bay. The project includes two 73-storey towers and one 52-storey tower with a 7-storey podium including basement, ground floor and five floors of retail and parking as well as the largest swimming pool and leisure deck in the UAE. Each tower has a unitised curtain wall, projecting balconies and glass reinforced concrete/stone rain-screen systems. In addition to the residential units, each of the three towers (Meera, Noora and Amna) has a hotel with exclusive dining, entertainment, fitness and spa facilities.



Glass Typology

- ◆ Stopray Smart 30

Country: United Arab Emirates

City: Dubai

Architect: Atkins

Owner: Al Habtoor Group

Facade Fabricator: Inhabit

Glazing amount: 9,000 m²

| One Hotel by First Group

Glass Typology

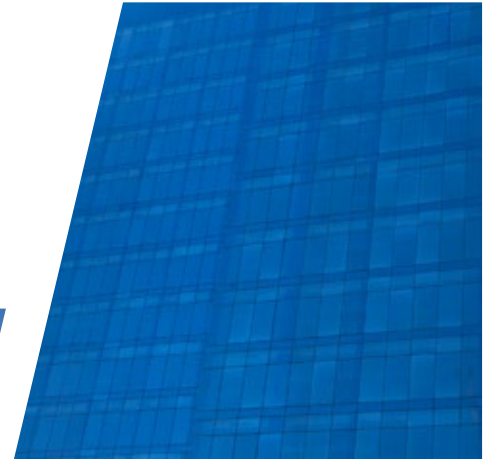
- ◆ Stopray Smart 30

Country: United Arab Emirates

City: Dubai

Owner: The First Group

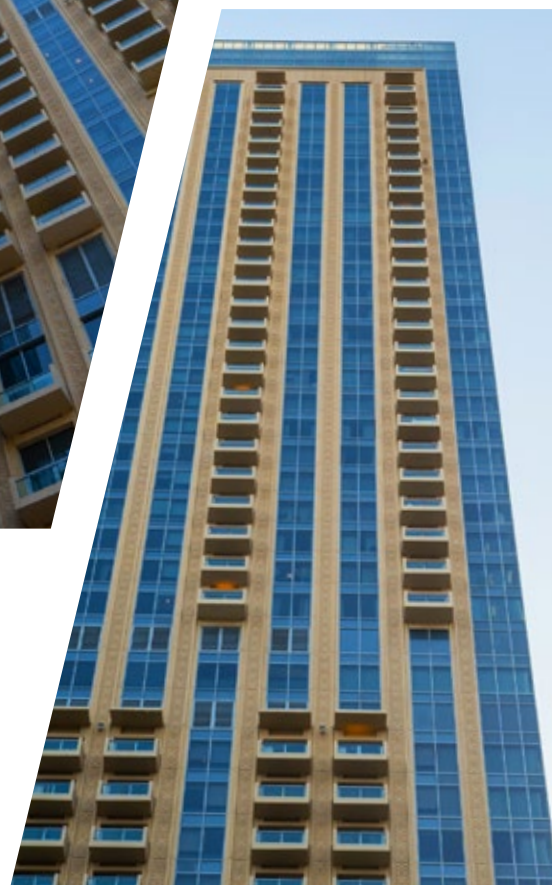
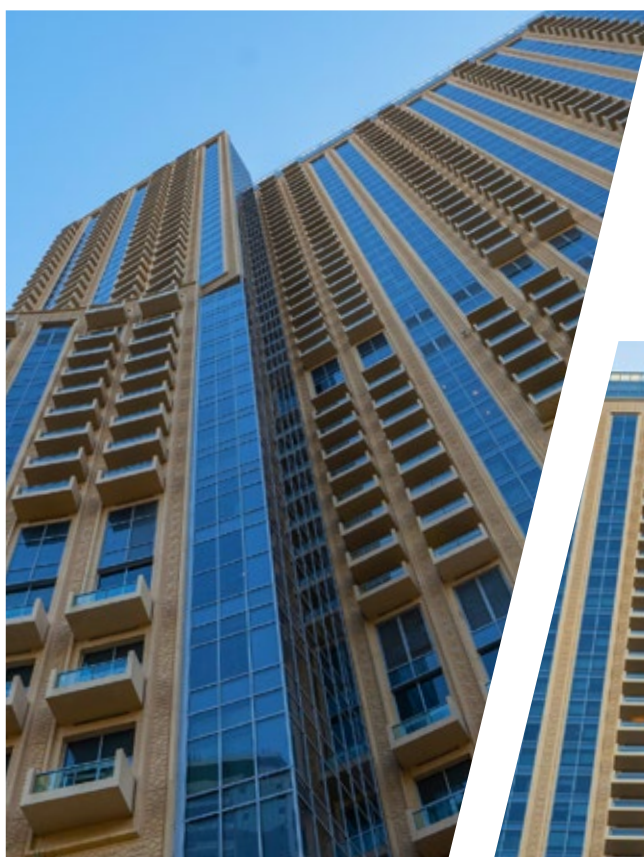
Glazing amount: 140,000 m²



This spectacular 492-room, four-star hotel is situated in the heart of Business Bay - dynamic, upcoming district of Dubai close to major transportation links and the city's many business and leisure attractions. Façade is featuring Stopray Smart 30 magnetron coated glass on clear substrate making the building stand out.

I Dubai Marina Mall & Address Hotel

Dubai Marina Mall is 390,000 square feet indoor shopping mall in the heart of marvelous Dubai Marina neighbourhood. The 5-star Address Dubai Marina hotel is directly linked to the mall. Both buildings are featuring high-performance coated glass Stopray Titanium-34T with deep grey shade.



Glass Typology

- ◆ Stopray Titanium-34T

Country: United Arab Emirates

City: Dubai

Architect: Archgroup

Owner: Emaar

Glazing amount: *7,000 m²*

I Dubai Hills Estate Business Park - Park Point

Glass Typology

- ◆ Stopray Vision-40T

Country: United Arab Emirates

City: Dubai

Owner: Emaar

Glazing amount: 7,000 m²



Dubai Hills Business Park is a sub-community of Dubai Hills Estate featuring residential and office spaces. Launched in 2017, the project was completed in 2021. The office buildings are seven-storey plus ground level, with six floors of parking provided in a fifth building. The total built area of the project is 150,000 sqm. High-performance magnetron coated glass Stopray Vision-40T was selected for the entire project.

| Al Faraa Hotel

5-star hotel & hotel apartment building in the old part of Dubai is featuring rich blue façade, which was possible to achieve thanks to the intensive shade of Sunlux BlueChroma solar control glass.



Glass Typology

♦ Sunlux BlueChroma | iPlus Solid

Country: United Arab Emirates

City: Dubai

Glazing amount: 20,000 m²

I MYRIAD University Campus

The Myriad Dubai is a fully-integrated, urban-styled student living community, located in the heart of Dubai International Academic City. The campus is designed to cater to the wants and needs of the modern student, taking into account vital factors such as safety, security, comfort and convenience. High-performance magnetron coated glass Stopray GreyAce-30T was chosen for the building, which colour makes a perfect match with grey and orange elements used on the façade.



Glass Typology

- ◆ Stopray Grey Ace-30T

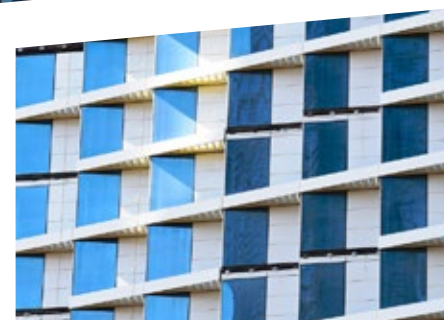
Country: United Arab Emirates

City: Dubai

Owner: Strategic Housing Group (SHG)

I The King Abdullah Financial District (KAFD) World Trade Centre KAFD Parcel 1.08

The KAFD is a development under construction near King Fahad Road in Riyadh. Consisting of 59 towers in an area of 1.6 million square meters, the KAFD is to create a platform of buildings and technology equal to any other major financial centre.



Glass Typology

- ◆ Stoprav Vision-50T

Country: Kingdom of Saudi Arabia

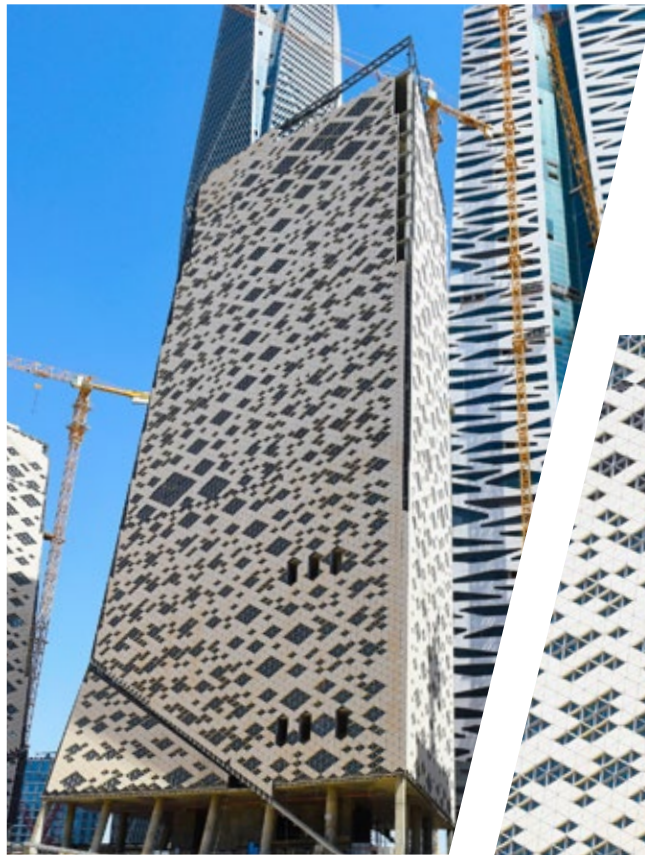
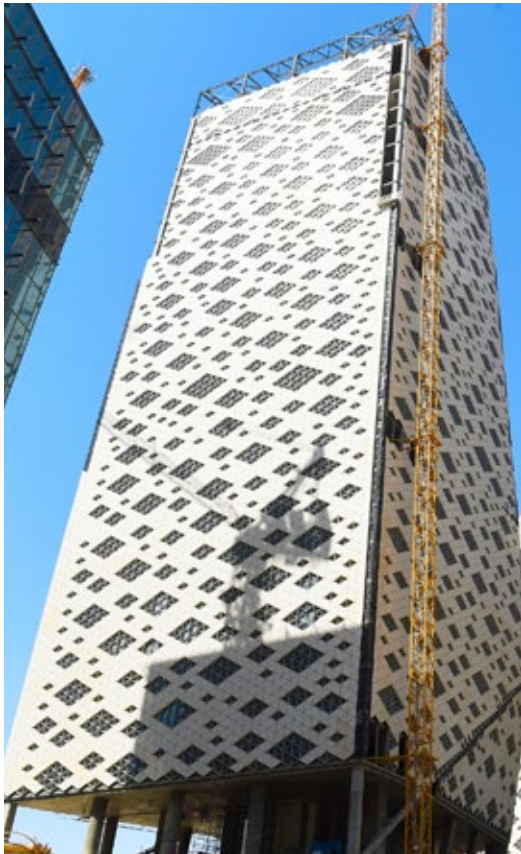
City: Riyadh

Architect: Goettsch Partners

Glazing amount: 25,000 m²

| The King Abdullah Financial District (KAFD) World Trade Centre KAFD Parcel 1.10 - Crystal Towers

The KAFD is a development under construction near King Fahad Road in Riyadh. Consisting of 59 towers in an area of 1.6 million square meters, the KAFD is to create a platform of buildings and technology equal to any other major financial centre.



Glass Typology

- ◆ Energy NT

Country: Kingdom of Saudi Arabia

City: Riyadh

Architect: Hening Larsen Architects

Glazing amount: *8,000 m²*

I The King Abdullah Financial District (KAFD) World Trade Centre KAFD Parcel 1.11

The KAFD is a development under construction near King Fahad Road in Riyadh. Consisting of 59 towers in an area of 1.6 million square meters, the KAFD is to create a platform of buildings and technology equal to any other major financial centre.



Glass Typology

- ◆ Stopray Vision-36T

Country: Kingdom of Saudi Arabia

City: Riyadh

Architect: Nikken Sekkei Ltd.

Glazing amount: 46,000 m²

| The King Abdullah Financial District (KAFD) World Trade Centre KAFD Parcel 1.12

Glass Typology

- ◆ Stopray Vision-50T

Country: Kingdom of Saudi Arabia

City: Riyadh

Architect: Kling Stubbins

Glazing amount: 20,000 m²



The KAFD is a development under construction near King Fahad Road in Riyadh. Consisting of 59 towers in an area of 1.6 million square meters, the KAFD is to create a platform of buildings and technology equal to any other major financial centre.

| The King Abdullah Financial District (KAFD) World Trade Centre KAFD Parcel 1.17 - Tadawul Tower

Glass Typology

- ◆ Stopray Vision-36T

Country: Kingdom of Saudi Arabia

City: Riyadh

Architect: Nikken Sekkei Ltd.

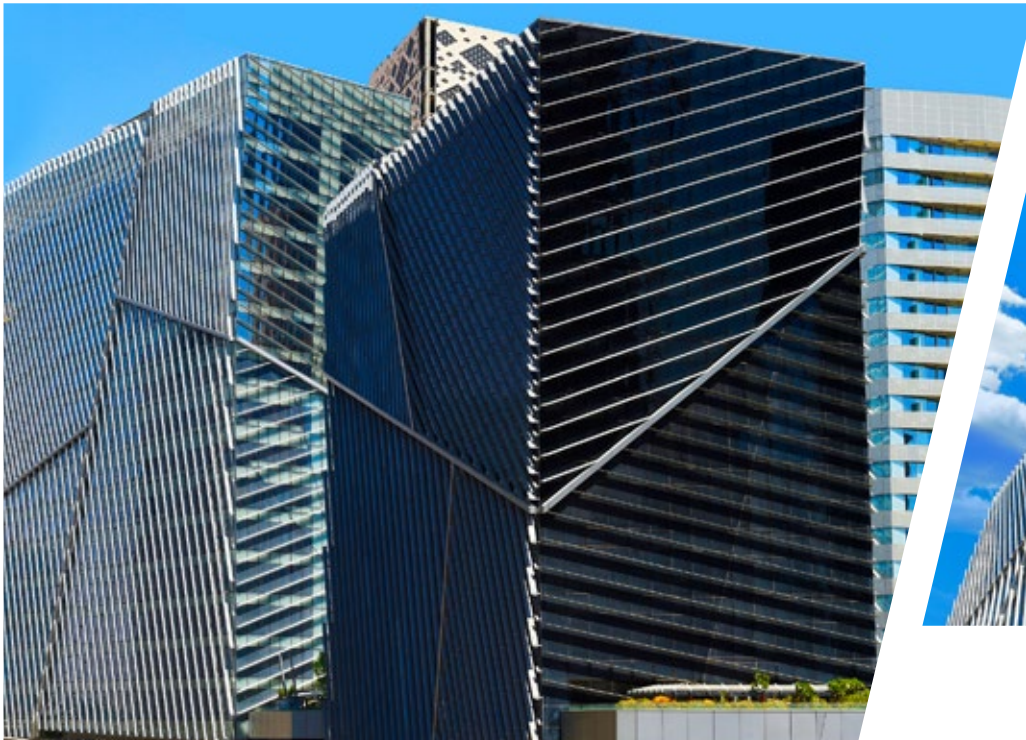
Glazing amount: 46,000 m²



The KAFD is a development under construction near King Fahad Road in Riyadh. Consisting of 59 towers in an area of 1.6 million square meters, the KAFD is to create a platform of buildings and technology equal to any other major financial centre.

| The King Abdullah Financial District (KAFD) World Trade Centre KAFD Parcel 5.07 & 5.08

The KAFD is a development under construction near King Fahad Road in Riyadh. Consisting of 59 towers in an area of 1.6 million square meters, the KAFD is to create a platform of buildings and technology equal to any other major financial centre.



Glass Typology

- ◆ Stopray Vision-36T
- ◆ Stopray Titanium-34T
- ◆ Stopsol Supersilver Clear

Country: Kingdom of Saudi Arabia

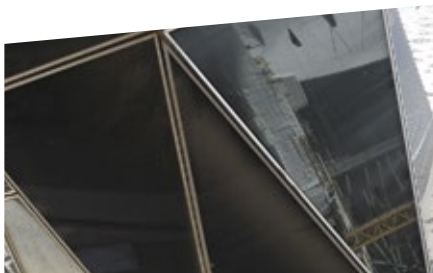
City: Riyadh

Architect: Omrania & Associates

Glazing amount: 56,000 m²

I The King Abdullah Financial District (KAJD) World Trade Centre KAJD - The Skywalks

The KAJD is a development under construction near King Fahad Road in Riyadh. Consisting of 59 towers in an area of 1.6 million square meters, the KAJD is to create a platform of buildings and technology equal to any other major financial centre.



Glass Typology

- ◆ Stoprav Titanium-34T

Country: Kingdom of Saudi Arabia

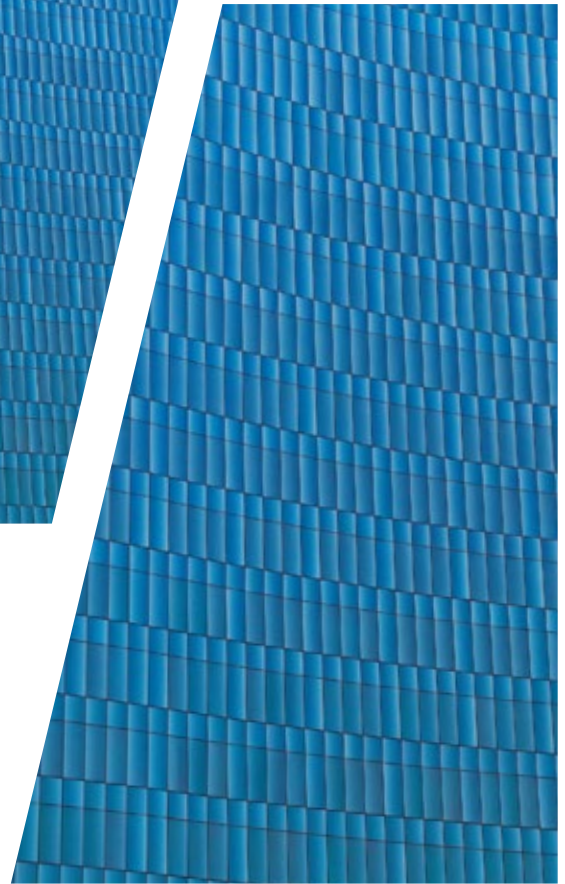
City: Riyadh

Architect: Hening Larsen Architects

Glazing amount: 100,000 m²

I The Assilla Towers

Rising out of the Jeddah's Tahlia Street district in Jeddah, the Assilla Towers have become a landmark building in Jeddah. The 23-storey tower is a 5-star hotel, with a distinctive curved design and eye-catching metallic exterior. The smaller tower, rising 17 storeys, contains mainly serviced apartments.



Glass Typology

- ♦ Energy NT

Country: Kingdom of Saudi Arabia

City: Jeddah

Architect: Mohamad Harasani Architects

Glazing amount: 20,000 m²

I Hilton Riyadh Hotel & Residence

The 5-star Hilton Hotel & Residence building in Riyadh has become a truly artistic landmark within the capital city of Saudi Arabia. The project occupies a 37,500 m² site and was awarded a prize for hotel architecture.



Glass Typology

- ◆ Stopray Vision-50T

Country: Kingdom of Saudi Arabia

City: Riyadh

Owner: Omrania & Associates

Glazing amount: 35,000 m²

I The Leaf Tower

Leaf Tower is a commercial and residential tower located on Al Reem Island in Abu Dhabi. It is deemed as one of the future hallmarks of the island. The plant-like shape of the 228 m tall building is no coincidence, as the structure means it offers panoramic views of the surrounding landscape.

Glass Typology

- ◆ Stopray Vision-36T

Country: United Arab Emirates

City: Abu Dhabi

Architect: Etan Consultant

Façade maker: Alico Aluminium

Glazing amount: 170,000 m²



I Landmark Group HQ

Glass Typology

- ◆ Stopray Smart 30/20

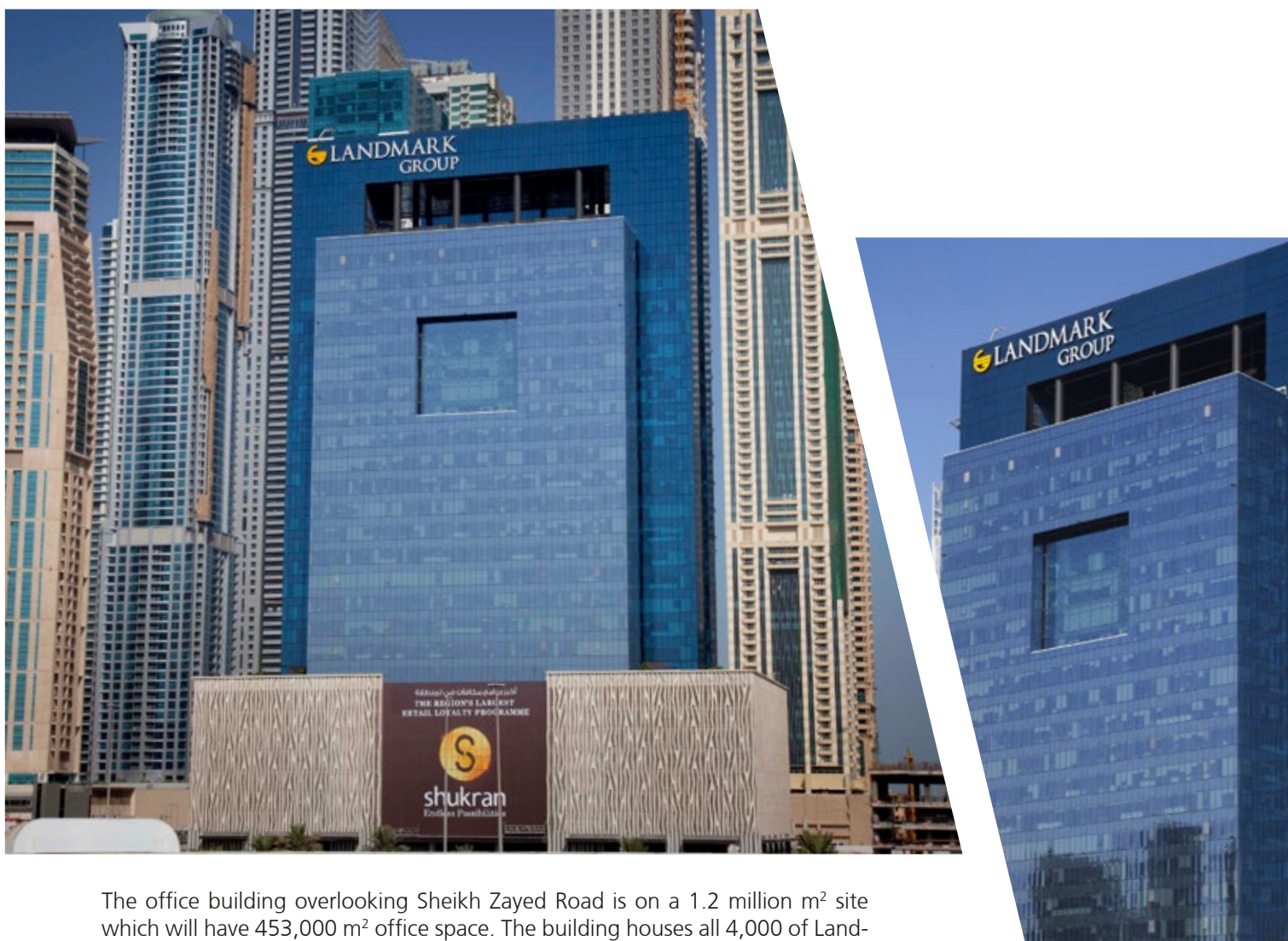
Country: United Arab Emirates

City: Dubai

Architect: Arch Group

Façade maker: Alico Aluminium

Glazing amount: 14,000 m²



The office building overlooking Sheikh Zayed Road is on a 1.2 million m² site which will have 453,000 m² office space. The building houses all 4,000 of Landmark Group's retail corporate employees. The company is targeting a LEED Silver rating for its new headquarters.

| Saraya Towers



One of the two striking, luxury residential towers with breathtaking water views of the Abu Dhabi Corniche and the lagoon of Saraya.



Glass Typology

- ◆ Stopray Vision-50T
- ◆ Planibel Azur

Country: United Arab Emirates

City: Abu Dhabi

Architect: Etan Consultant

Glazing amount: 50,000 m²

| The Onyx Towers

Glass Typology

- ◆ Stopray Smart 30/20

Country: United Arab Emirates

City: Dubai

Architect: Keo

Façade maker: Alumco

Glazing amount: 34,000 m²



The Onyx is located near the Greens and Emaar Business Park on Sheikh Zayed Road. The scope of the project includes 3 towers with a business hotel, a commercial tower and a mixed use tower in addition to a large selection of retail facilities and restaurants integrated in the building's podium with 4 floors.

| Solar panel manufacturing company, HQ

Headquarters of the solar panel manufacturing company located in Dubai Silicon Oasis. The building was developed following the design guidelines of the owner. Solar panels used in the fence complement the dark grey façade, making the building stand out.



Glass Typology

- ◆ Stopray Smart 30 on Grey

Country: United Arab Emirates

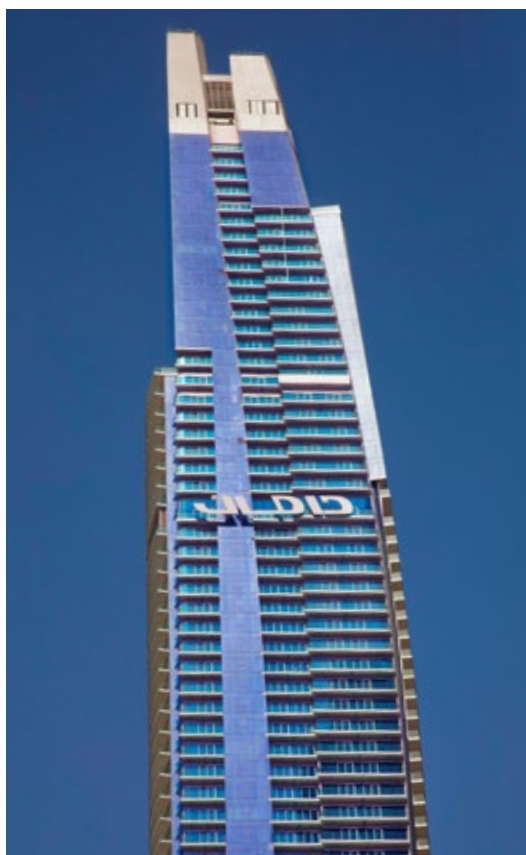
City: Dubai

Owner: Solar panel manufacturing company

Glazing amount: 4,000 m²

I Damac Heights

The award-winning DAMAC Heights is a 420 m high residential tower located in Dubai Marina. The tower rises 84 floors into the sky, affording uninterrupted panoramic views of the ocean and Palm Jumeirah island. Designed by Aedas, DAMAC Heights comes with all the trappings of an indulgent lifestyle, such as world-class amenities.



Glass Typology

- ◆ Stopray Smart 30

Country: United Arab Emirates

City: Dubai

Architect: AEDAS

Glazing amount: 45,000 m²

I Vivanta Tower

A 46-storey tower featuring 200 hotel rooms, 130 branded apartments, recreational facilities and dining venues is located in Dubai Jumeirah Lakes Towers. Vivanta by Taj hotel extends from the ground floor to the 17th floor, followed by the apartment block of Signature Developers Limited - The Residences.

Glass Typology

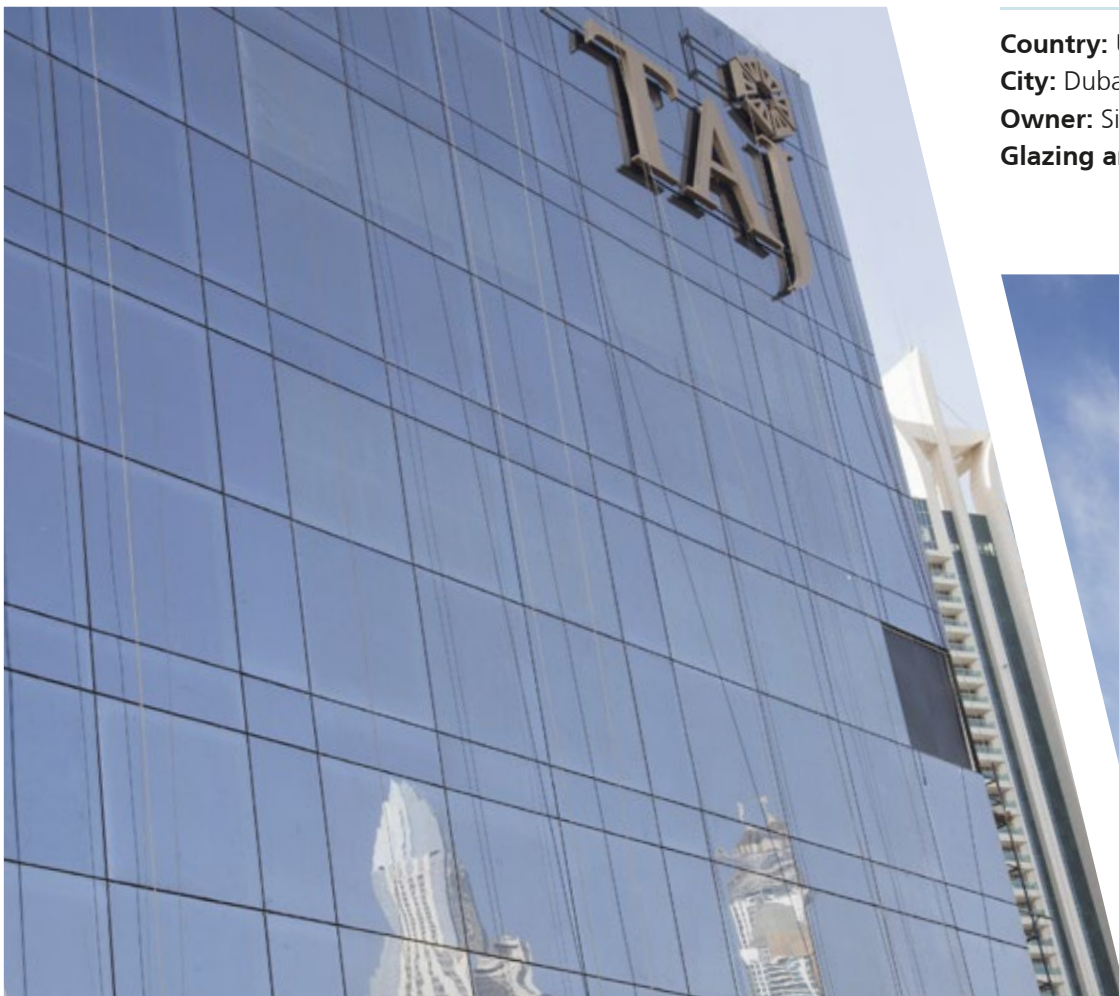
- ◆ Stopray Smart 30

Country: United Arab Emirates

City: Dubai

Owner: Signature Holdings

Glazing amount: *35,000 m²*



| Amity University

Amity University's new campus set to accommodate a total of 5,000 students at full capacity. With its space of 65,000 m², it is the largest academic development in Dubai International Academic City.



Glass Typology

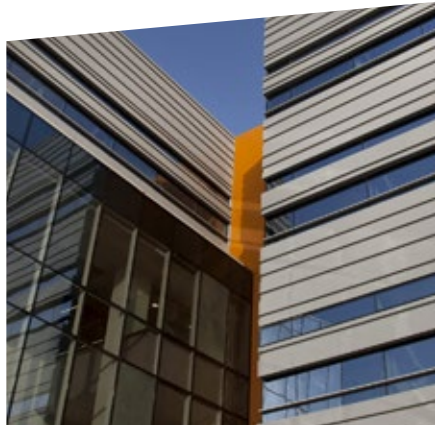
- ◆ Stopray Smart 30/20
- ◆ Stopray Vision-50T

Country: United Arab Emirates

City: Dubai

Façade maker: Alico Aluminium

Glazing amount: 20,000 m²



| 20 Fenchurch Street (The Walkie-Talkie)

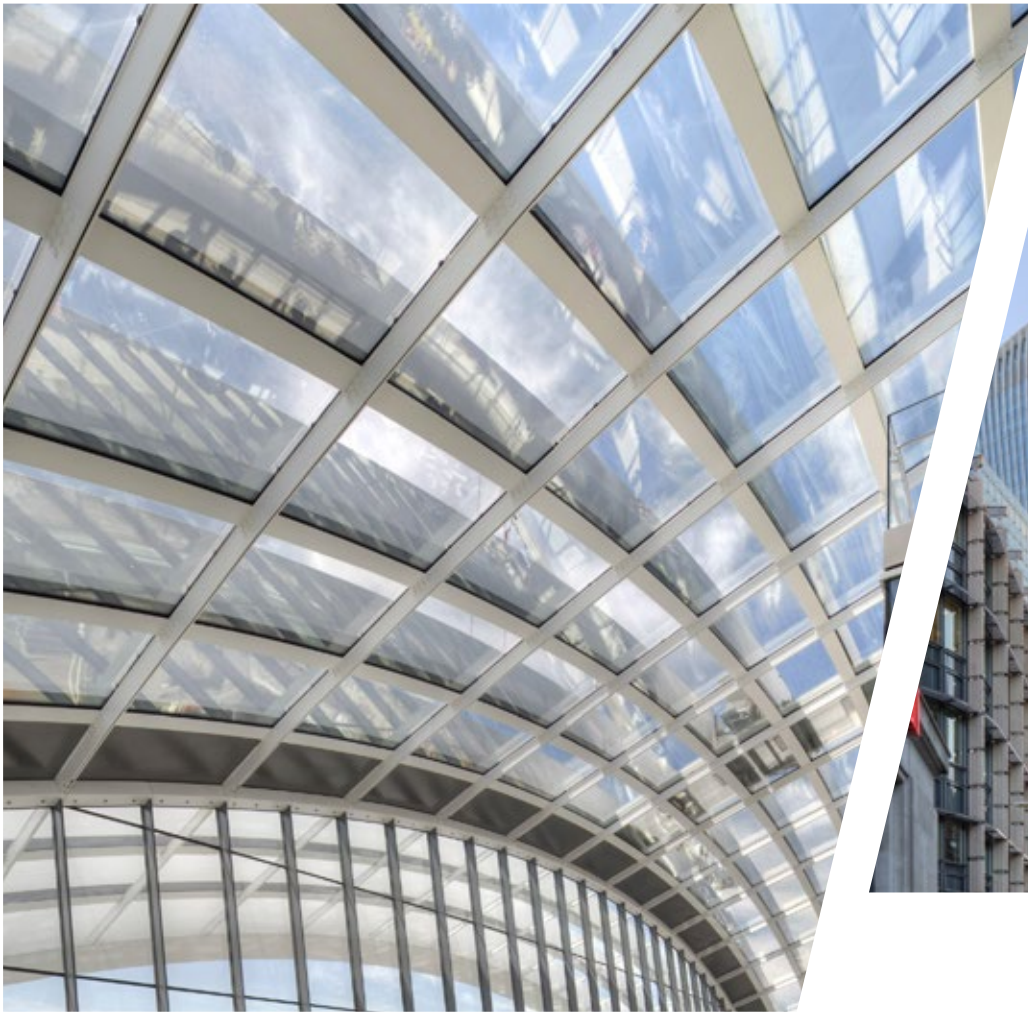
Glass Typology

- ◆ Stopray Vision-50

Country: The United Kindgom

City: London

Architect: Rafael Viñoly



20 Fenchurch Street is a commercial skyscraper in London, in the historic City of London financial district. It has been nicknamed "The Walkie-Talkie" because of its distinctive shape. The 34-storey glass building is 160 m tall, making it the sixth-tallest building in the City of London and the 12th tallest in London.

| Allianz Tower

With its 50 floors, the 207 m high tower within CityLife area is one of the tallest buildings in Italy. The base is narrow and long, thus accelerating the building's verticality. A convex glass modular system supported by 3 steel struts reduces wind and seismic loads.



Glass Typology

- ◆ Stopray Vision-60T

Country: Italy

City: Milan

Architect: Arata Isozaki & Andrea Maffei Architects

Glazing amount: 120,000 m²

| Varesine

Business District Varesine, awarded LEED Gold 2014, comprises 3 buildings with strong and elegant lines and the complex has become the icon in the Milan marketplace and a new symbol of technology and innovation in Italy.



Glass Typology

◆ Stopray Vision-50

Country: Italy

City: Milan

Architect: Kohn Pederson Fox Associates (KPF)

Façade maker: Coopsette

Glazing amount: 40,000 m²



| Warsaw Spire

The Warsaw Spire is a complex of neo-modern office buildings in Warsaw constructed by the Belgian real estate developer Ghelamco. It consists of a 220-metre main tower with a hyperboloid glass façade and two 55-metre auxiliary buildings. The main tower is the 3rd highest building in Poland.



Glass Typology

- ◆ Stopray Vision-50T

Country: Poland

City: Warsaw

Architect: Jaspers-Eyers Architects

I Trinity Park I, II & III

A highly-successful complex of top-class and modern office buildings invested by Ghelamco. Trinity Park is one of the first buildings in Warsaw for which a BREEAM certification application has been filed.



Glass Typology

- ◆ Stopray Vision-50T

Country: Poland

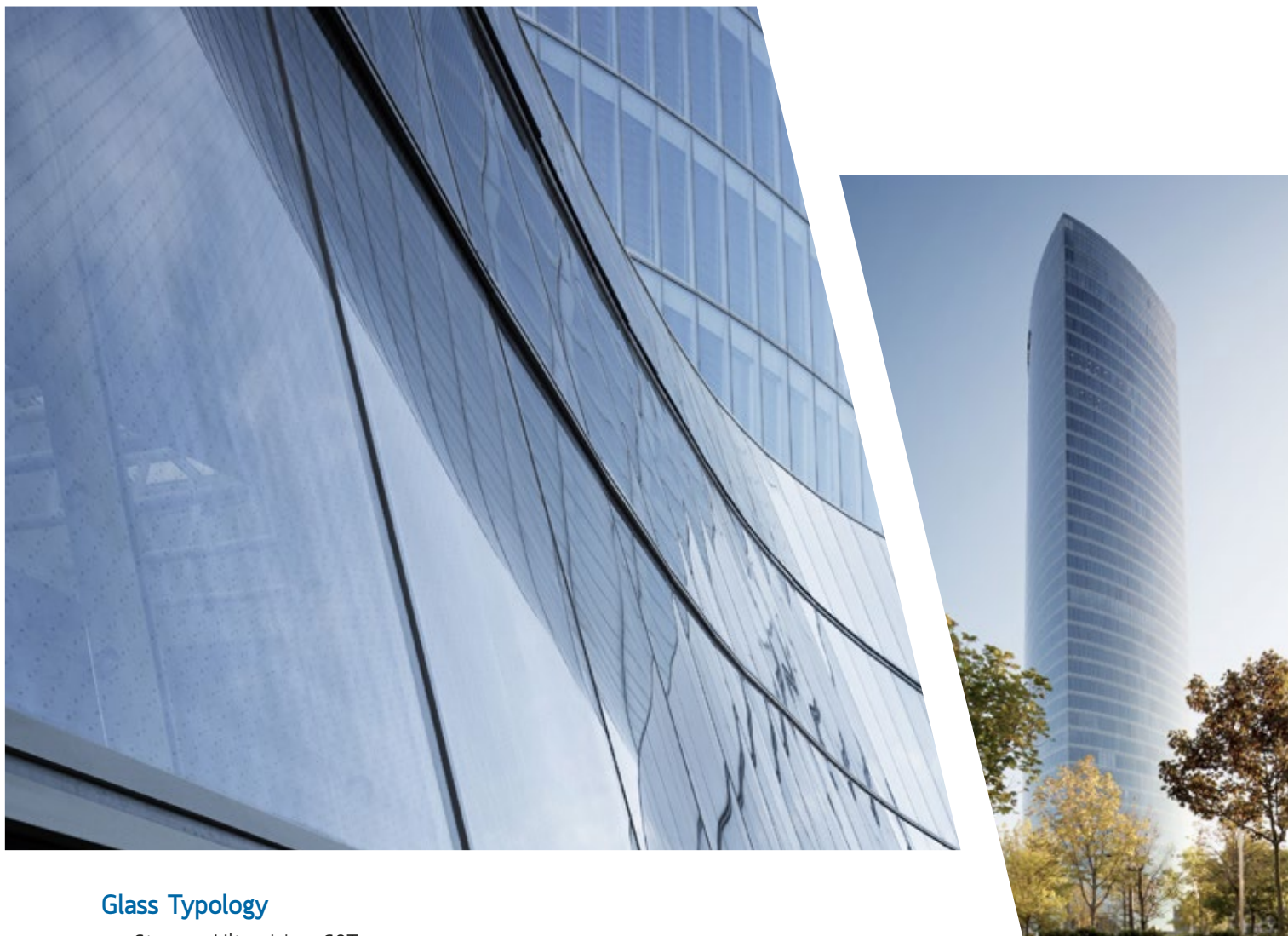
City: Warsaw

Owner: Konior & Partners Architects

Glazing amount: *18,000 m²*

Iberdola Tower

At 165 metres and 41 floors high, The Iberdola Tower is the headquarters of the Iberdrola electricity company. It is the largest of all office skyscrapers rising in Spain. Its façade is covered with 4,800 glass panes designed exclusively for this tower.



Glass Typology

- ◆ Stopray Ultravision-60T

Country: Spain

City: Bilbao

Architect: César Pelli

Glazing amount: 20,000 m²

I Puig Tower

Puig is an international company operating in the fashion and fragrance sectors. Its new headquarters building is located in the municipality of Hospitalet de Llobregat, close to Barcelona's Fira, the international exhibition area. 22-storey tower, 109 meters high.



Glass Typology

- ◆ Stopray Vision-50T on Clearvision
8 mm - 16 mm 100 % air - Stratobel Clearvision 55.2

Country: Spain

City: Barcelona

Architect: Rafael Moneo

Façade maker: Permasteelisa

Glazing amount: 8,500 m²

| MyZeil

MyZeil is a shopping mall with a sculptural glass façade creating impressive and dynamic spaces within the public atriums. The 77,000 m² structure is inspired by the historical context of the site.



Glass Typology

- ◆ Stopray Vision-50T

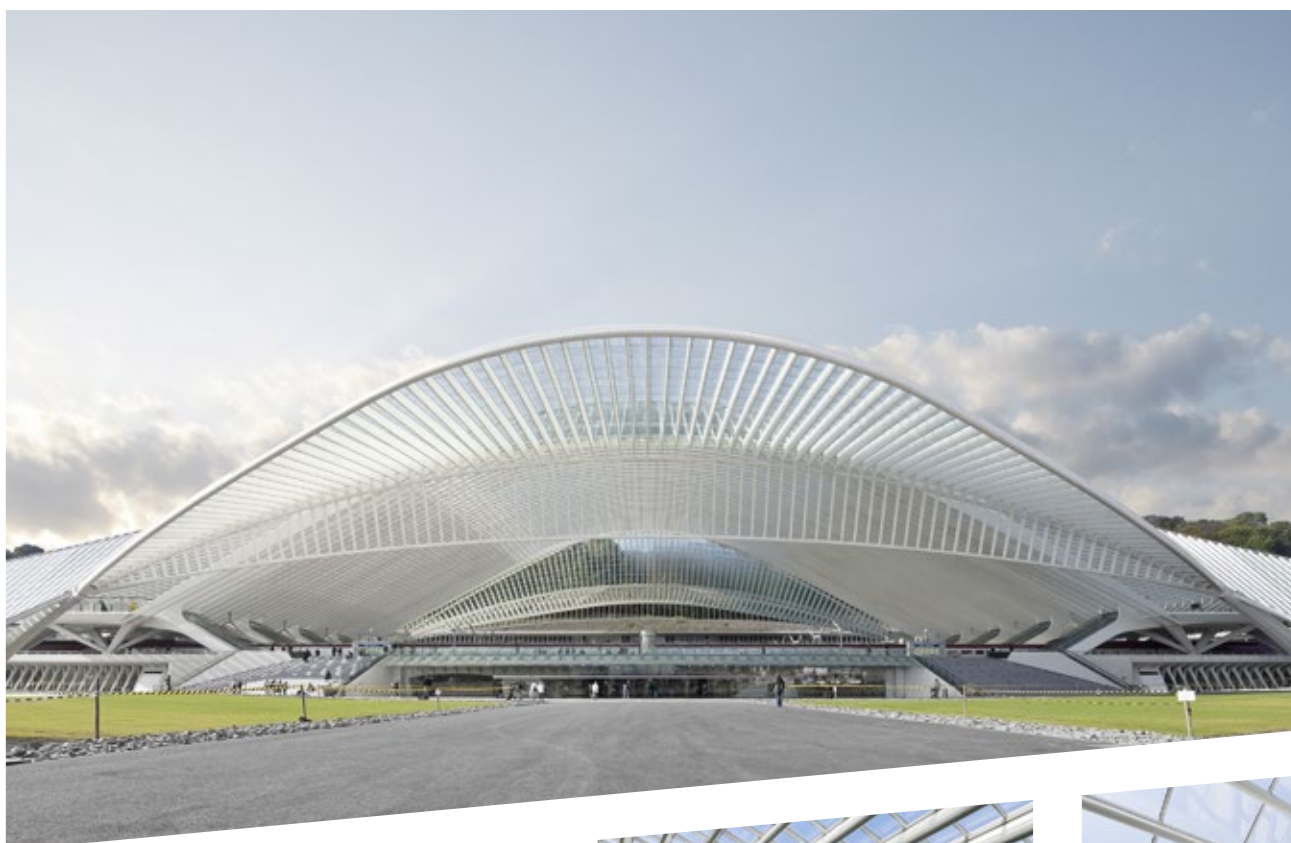
Country: Germany

City: Frankfurt

Architect: Studio Fuksas –
Massimiliano and Doriana Fuksas

I Liège-Guillemins Railway Station

This high-speed railway station is one of the most important hubs in Belgium. It is made of steel, glass and white concrete. It includes a monumental arch, 160 m long and 32 m high. It has 9 tracks and 5 platforms and is used by 15,000 people every day.



Glass Typology

- ♦ Stratobel Anti-accident laminated safety glass

Country: Belgium

City: Liège

Architect: Santiago Calatrava

I Ghelamco Arena

The Arena is a multi-use stadium that hosts the home matches of football club K.A.A. Gent. It is the first new-built Belgian football stadium since 1974.



Glass Typology

- ◆ Stopray Ultra-50 on Clearvision

Country: Belgium

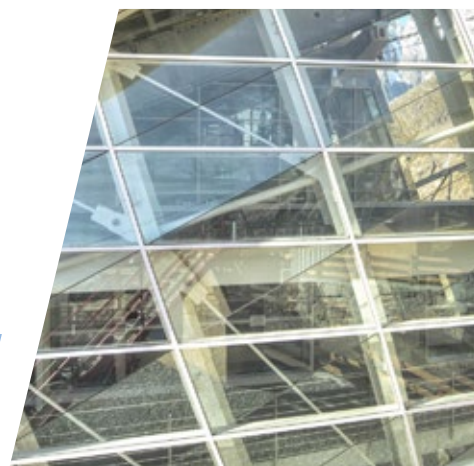
City: Ghent

Architect: Bontick

Glazing amount: 20,000 m²

I Skyway Monte Bianco

The new Mont Blanc cableways, an extreme engineering challenge Skyway Monte Bianco between the eternal ice of Mont Blanc, enable the visitors to set out on a magical journey. The 3 stations at 1,300 m, 2,200 m, and 3,466 m, are connected by 2 cableway sections, which are protected spaces built in AGC's triple glazing units and steel that harmonize with the surrounding environment.



Glass Typology

- ♦ iplus E in triple glazing units on clearvision glass

Country: Italy

City: Courmayeur – Entrèves

Architect: Studio Progetti Cillara Rossi

Glazing amount: 2,000 m²

I 24 King Williams Street

Glass Typology

- ♦ ipasol neutral 70/37, Stopray Energy NT

Country: United Kingdom

City: London

Architect: Ben Adams Architects



The 24 King William St project involves transforming a dated and under-utilised 1980s steel framed office building into a new attractive and lettable building on this prominent location. To add value to the site a new 3 storey mansard was added to replace the existing roof plant area providing an addition 20,000sqft of net internal area. The new facade components were primarily unitised factory fabricated glazed curtain walling elements with add-on bronze alloy pressed metal work and honeycomb backed natural limestone panels. Retail level elements comprised of bronze curtain walling and large format flat and curved glazed panels.

| Astoria

A prestigious office building owned by Strabag Real Estate in the best location of the Poland capital's Midtown. Its architecture directly invokes the surrounding historical developments. Its fit-out beats the contemporary standards. A hidden gem in Poland's real estate with 10 storeys, 900 m² of commercial premises, over 18,000 m² of modern office space and 87 car park spaces.



Glass Typology

- ◆ Stopray Vision-72T

Country: Poland

City: Warsaw

Architect: Epstein / Biuro Projektów Kazimierski I Ryba Sp. j.

Glazing amount: 4,000 m²